

## DOLD K70 Monteringskasser

6-32 tilslutningsklemmer

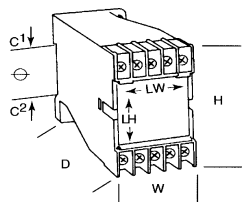
Anvendes op til 60 C (140 F)

Materiale: Polykarbonat og ABS

Standardfarve: Lys grå



Monteringskasse	KO 4753	KO 4756	KO 4752	KO 4757	K70/55A	K70/075A	K70/045D	K70/100A	K 4710	K70/150A
Volt/Ampere*	300V/25A	300V/25A	300V/25A	300V/25A	300V/25A	300V/25A	300V/25A	300V/25A	300V/25A	300V/25A
Max. ledningsstørrelse AWG**	12 AWG	12 AWG	12 AWG	12 AWG	12 AWG	12 AWG	12 AWG	12 AWG	12 AWG	12 AWG
Antal klemmer	8	10	12	12	12	16	20	20	20	32
<b>Max. antal printkort pr. monteringsposition</b>										
Horizontal (parallel) (Fig. A)						6		6	6	4
Vertikal (lodret) (Fig. B)	2	10	2	2	5	7	10	4	4	8
Vertikal bag frontplade (parallel) (Fig. C)						1			1	1
<b>Klemmetype</b>										
Trykplade	◆	◆	◆	◆	◆	◆	◆	◆	◆	◆
<b>Klemme-til-kort-forbindelse</b>										
<b>Faste</b>										
Ledningsløjfe	◆	◆	◆	◆	◆	◆	◆	◆	◆	◆
Loddetap						◆			◆	◆
Fast-On	◆		◆				◆	◆		
Maskinloddetappe		◆		◆						
<b>Indstik</b>										
Kortkant-connector						◆			◆	◆
<b>Montering</b>										
35mm DIN-skinne (7,5mm dyb)	◆	◆	◆	◆	◆	◆	◆	◆	◆	◆
Panel, hjørneskruer		◆			◆	◆	◆	◆	◆	◆
Panel, Træk-ud-tappe***	◆	◆	◆	◆	◆	◆	◆	◆	◆	◆
<b>Størrelsesmål mm</b>										
H	75,0	75,0	75,0	75,0	73,0	73,0	74,0	73,0	74,0	73,0
W	22,5	45,0	22,5	22,5	55,0	75,0	45,0	100,0	100,0	150,0
D	97,0	112,0	97,0	97,0	114,0	114,0	124,0	114,0	114,0	113,0
C1	38,0	35,0	38,0	36,5	35,0	35,0	35,0	35,0	35,0	35,0
C2	38,0	35,0	38,0	38,0	35,0	35,0	35,0	35,0	35,0	35,0
<b>Mærkatområde</b>										
LH	21,0	40,0	21,0	21,5	48,0	68,0	43,5	95,0	95,0	143,0
LW	22,0	35,0	22,0	30,0	36,0	36,0	18,5	35,5	35,5	36,0



\* Spændingen kan øges, kontakt os venligst for mere information

\*\* 1 eller 2 ledninger kan forbindes med trykpladeklemmen

\*\*\*Der leveres en tap pr. monteringskasse, dog har K7022.5C to tappe.

Ekstra tappe kan leveres.

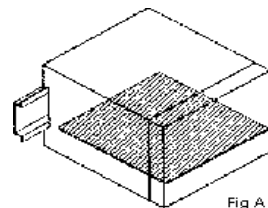


Fig A

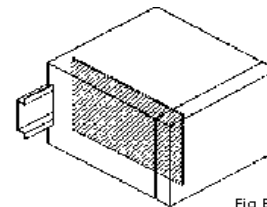


Fig B

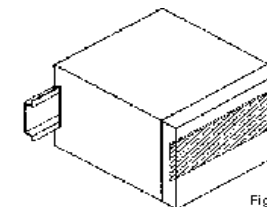


Fig C

### BAASTRUP A/S

Dronning Olgas Vej 30 - 2000 Frederiksberg

Tlf 38 10 21 29 - Email info@baastrup.com

[www.baastrup.com](http://www.baastrup.com)