



## KO 4070 Monteringskasser

4-16 tilslutningsklemmer til maskinlodning

Meget kompakt serie

Anvendes op til 110 C (230 F)

Materiale: Polykarbonat

Standardfarve: Lys grå



Monteringskasse	KO 4071	KO 4072	KO 4074	KO 4073	KO 4077	KO 4075	KO 4076	KO 4078	KO 4079
Volt/Ampere	300V/25A	300V/25A	300V/25A	300V/25A	300V/25A	300V/25A	300V/25A	300V/25A	300V/25A
Max. ledningsstørrelse AWG	12 AWG	12 AWG	12 AWG	12 AWG	12 AWG	12 AWG	12 AWG	12 AWG	12 AWG
Antal klemmer	4	6	6	8	8	9	12	12	16
Max. antal printkort pr. monteringsposition									
Vertikal på siden (lodret) (Fig. B)			1	1	2	1	1	2	2
Vertikal vendt mod klemmer (parallel) (Fig. C)	2	2	2	2	2	2	2	2	2
Klemmetype									
Burklemme	◆	◆	◆	◆	◆	◆	◆	◆	◆
Klemme-til-kort-forbindelse									
Loddetappe	◆	◆	◆	◆	◆	◆	◆	◆	◆
Montering									
35mm DIN-skinne (7,5mm dyb)	◆	◆	◆	◆	◆	◆	◆	◆	◆
Størrelsesmål mm									
W	12,5	12,5	20,5	12,5	28,5	20,5	20,5	28,5	28,5
H1	60,0	60,0	60,0	60,0	60,0	60,0	60,0	60,0	60,0
H2	-	75,0	-	90,0	-	75,0	90,0	75,0	90,0
D1	60,0	60,0	60,0	96,0	60,0	60,0	60,0	60,0	60,0
D2	-	31,0	-	31,0	-	31,0	31,0	31,0	31,0
C1	30,0	30,0	30,0	45,0	30,0	30,0	45,0	30,0	45,0
C2	30,0	45,0	30,0	45,0	30,0	45,0	45,0	45,0	45,0
Mærkatområde									
LH	33,0	33,0	33,0	33,0	33,0	33,0	33,0	33,0	33,0
LW	10,5	10,5	10,5	19,0	27,0	19,0	19,0	27,0	27,0

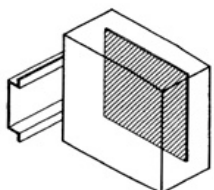
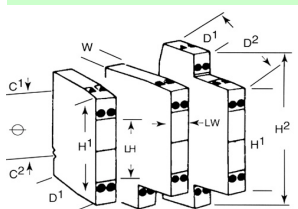


Fig. B

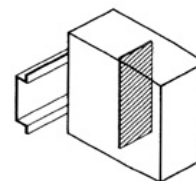


Fig. C

### BAASTRUP A/S

Dronning Olgas Vej 30 - 2000 Frederiksberg

Tlf 38 10 21 29 - Email info@baastrup.com

[www.baastrup.com](http://www.baastrup.com)